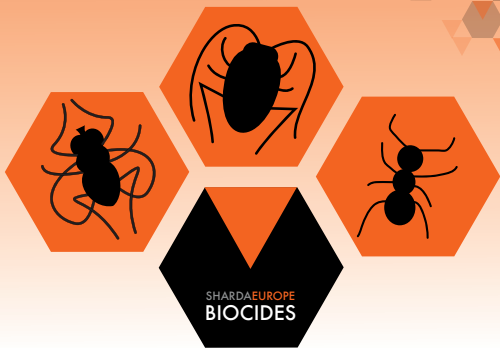


500cc

# DELTA CAPS 50CS



Liquid, concentrate for preparation of water slurry against running insects, intended for sanitary hygiene. With stomach and contact action.

Active substance: Deltamethrin 50 g/l - compound from the family of synthetic pyrethroids.

Xn



Harmful

N



Dangerous for the environment

R20/22: Harmful by inhalation and if swallowed  
R50/53: Very toxic to aquatic organisms, may cause long term adverse effects in the aquatic environment.

S2: Keep out of reach of children

S13: Keep away from food, drink and animal

S23: Do not breathe vapors or spray cloud

S29: Do not empty into drains

S46: If swallowed, seek medical advice immediately and show this container or label.

S51: Use only in well-ventilated areas

S56: Dispose of this material and its container to hazardous or special waste collection point

S60: This material and its container as hazardous waste.

S61: Avoid release to the environment. Refer to special instructions of the safety data sheet.

Storage:

Keep out of the reach of children. Store in an original, tightly closed packaging in a well-ventilated, dry compartment. Keep away from food, drink and animal fodder.

Temperature range: 5 to +30°C

Lot No.:

Date of manufacturing / Expiry date:

Items in packaging:

Application

The preparation is intended for control of running insects, such as cockroaches, German cockroaches, bedbugs, ants and silverfish in sanitary hygiene.

It can be used in houses, utility rooms, production plants, food processing facilities, warehouses, livestock facilities, offices, public utility areas, hotels, etc.

Method of Use:

- Precisely determine the required amount of working liquid (50ml of liquid for 1 m<sup>2</sup> of sprayed substance).

- Shake the packaging in order to mix the content thoroughly.

- Prepare 1% working liquid (for example dilute 50 ml of formulation with water to obtain 5 litres).

- Spray insects pathways, the areas of skirting boards, doors, areas of ventilation ducts and central heating pipes, as well as slits and fissures, places where pests nest (walls corners, slits in floors, places behind the boards etc.).

The period from first use of the product till the moment of obtaining the biocidal results: from 1 to 24 hours.

In the case of re-infestations repeat the procedure at monthly intervals.

The facility may be used again only after the surface is completely dry and the place is thoroughly ventilated.

It is necessary to thoroughly disinfect (wash with water and a detergent) all surfaces contaminated with the preparation that may enter into contact with food, fodder, people or animals.

Minimum time of rooms' ventilation: 2 hours.

Safe handling instructions

It is necessary to remove any people and animals from the area for the duration of the procedure. Remove (or properly secure) plants, food, toys, uncovered dishes and other items that are used.

Do not spray any electric equipment which is switched on. It is not recommended for use in rooms where children, pregnant and breastfeeding women, elderly or sick people stay, as well as in the areas where groceries, drinks and animal fodder may enter into direct contact with the product.

Do not eat, drink or smoke while using the product. Wear protecting clothes, gloves and safety glasses while spraying.

Avoid staying within the range of sprayed liquid.

In the case of insufficient ventilation use airways protection equipment (for example mask with P1-type filter).

After the procedure wash entire body with water and soap.

Do not contaminate water reservoirs and water intakes with the preparation.

Disposal of product waste and packaging

Forward the product in its packaging to an authorised recipient of hazardous waste.

Empty packaging should be sent back to the seller where the preparation was purchased.

Direct and indirect side effects of use

- local: may cause eye and skin irritation

- inhaling: may cause cough, irritation

- systemic: excitement, gastric and intestinal problems, shaking, dizziness, headaches, apathy, nausea and vomiting.

First aid:

Inhalation - remove victim from the area of exposure, provide fresh air and keep at rest. In case of difficulties in breathing get medical help.

Skin contamination: take off all the contaminated clothing. Wash skin with plenty of water.

Eye contamination - wash eye with eye wash or with pure water for at least 15 minutes, keep eyelids open. Consult physician.

Ingestion - flush mouth with water if the victim is conscious. Immediately call physician.

First aid information for physicians

Deltamethrin belongs to sodium channel toxins, it lowers the sensory nerves sensitivity threshold and causes prolonged neuronal excitation.

Antidote: none. Apply symptomatic treatment.

In situations when other medical help not included in the precautions is necessary or required please contact the nearest Toxicology Centre.

